



**DYNAMIC  
 SOFTBALL  
 2018**

Set In Full Button



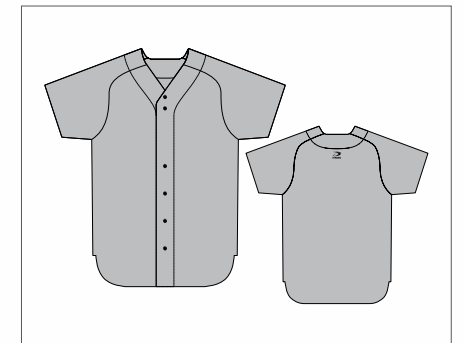
Jersey code: SB53W

Set In 2 Button



Jersey code: SB50W

Raglan Full Button



Sleeveless Full Button



Jersey code: SB54W

Buttons spaced 4" apart for Lettering • Curved hemmed bottom

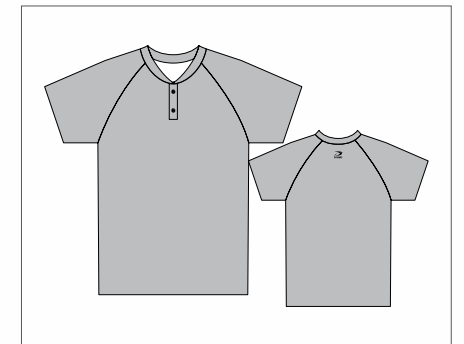
Sleeveless 2 Button



Jersey code: SB51W

Straight hemmed bottom

Raglan 2 Button



Sleeveless Tank



Jersey code: SB52W

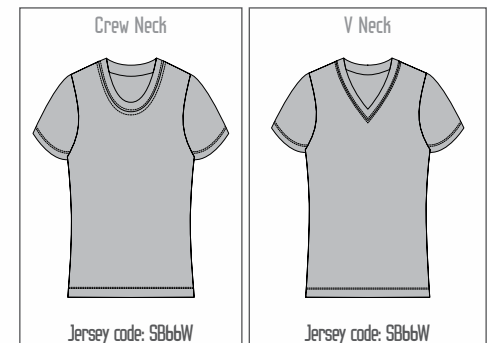
Crew neck and V neck option available

Sleeveless Racerback



Jersey code: SB55W

Throw Backs



Jersey code: SB66W

Jersey code: SB66W

Set-in Sleeve Construction • Straight hemmed bottom

Available sizes: YS . YM . YL . AS . AM . AL . AXL . AXXL . AXXXL

Sublimated Softball Pants Available

100% Polyester 14oz. Fabric • Bar tacked tunnel belt loops • Metal zipper fly with two snap closure • Double knee construction • Two double welted back pockets • Cover stitched back seam for durability and reinforcement

Style MATRIX

Cut SET IN 2 BUTTON



color zones  
1  
2

COLOR 2 = GRADIENT FADE

Style PROSPECT

Cut SET IN 2 BUTTON



color zones  
1  
2  
3

COLOR 2 = DIGITAL CAMO

Style COOPERSTOWN

Cut RAGLAN 2 BUTTON



color zones  
1  
2  
3

Style PRIDE

Cut TANK



color zones  
1  
2  
3

Style PRESTIGE

Cut RAGLAN 2 BUTTON



color zones  
1  
2  
3

Style LEGACY

Cut SET IN FULL BUTTON



color zones  
1  
2  
3  
4

Style **GROUNDER**

Cut **TANK**



- 1
- 2
- 3

COLOR 2 = GRADIENT FADE

Style **HEATER**

Cut **RAGLAN FULL BUTTON**



- 1
- 2
- 3

Style **HERITAGE**

Cut **RAGLAN FULL BUTTON**



- 1
- 2
- 3
- 4

Style **SHIMMER**

Cut **SLEEVELESS FULL BUTTON**



- 1
- 2
- 3

COLOR 2 = GRADIENT FADE

Style **ALLEY**

Cut **RAGLAN 2 BUTTON**



- 1
- 2
- 3

Style **CAMDEN**

Cut **RAGLAN 2 BUTTON**



- 1
- 2
- 3

Style **FADER**

Cut **SLEEVELESS FULL BUTTON**



- 1
- 2

COLOR 2: DOT CAMO

Style **RELIEVER**

Cut **RACERBACK**



- 1
- 2
- 3

Style **STARTER**  
Cut **SLEEVELESS 2 BUTTON**

color zones  
1  
2  
3



Style **SOUTH PAW**  
Cut **TANK**

color zones  
1  
2  
3



Style **WHEEL HOUSE**  
Cut **SET IN 2 BUTTON**

color zones  
1  
2  
3  
4



Style **SLUGGER**  
Cut **TANK**

color zones  
1  
2  
3



Style **SOUTH PAW**  
Cut **THROWBACK**

color zones  
1  
2  
3



Style **EXPOS 1**  
Cut **THROWBACK**

color zones  
1  
2  
3



Style **AMERICAN 2**  
Cut **SET IN 2 BUTTON**

color zones  
1  
2



Style **EXPOS 2**  
Cut **THROWBACK**

color zones  
1  
2  
3

